



**DIPLOMATIC
HYDRAULICS**

21 150/103 ED



PCDC06

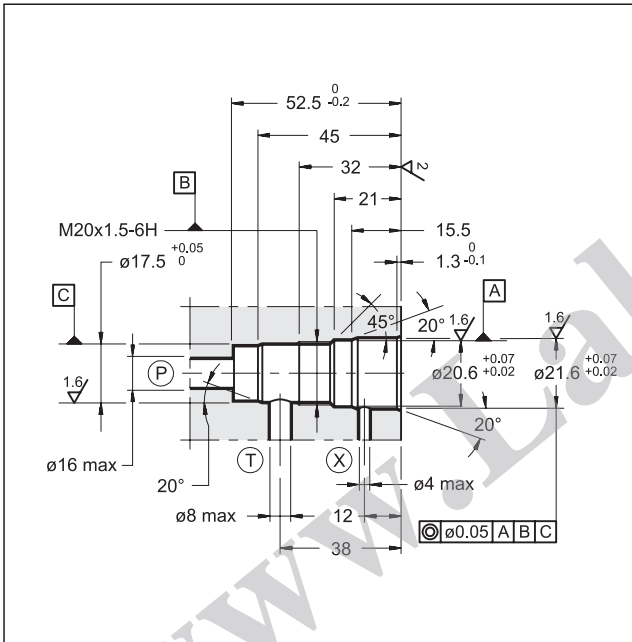
**DIRECT OPERATED THREE-WAY
PRESSURE COMPENSATOR
SERIES 12**

CARTRIDGE TYPE

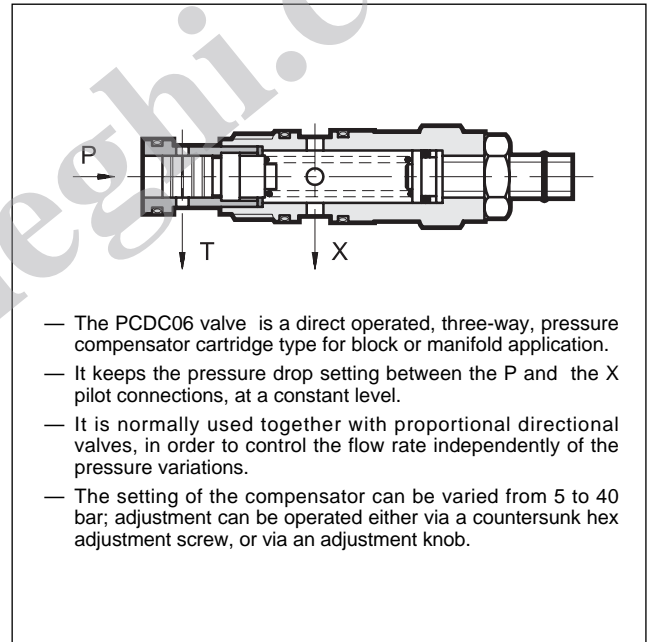
p max 350 bar

Q max 40 l/min

SEAT DIMENSIONS D-10D



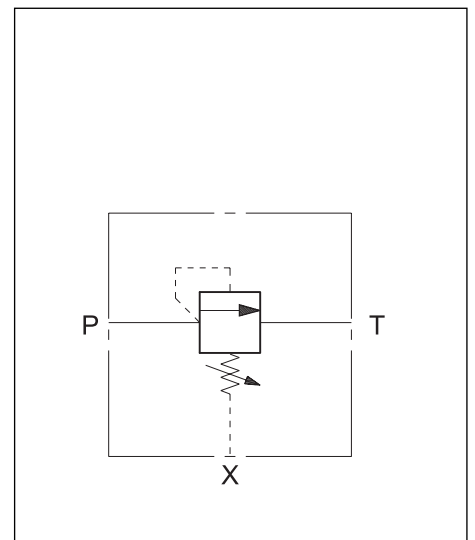
OPERATING PRINCIPLE



PERFORMANCE RATINGS (working with mineral oil of viscosity of 36 cSt at a 50°C)

Max working pressure	bar	350
Differential pressure regulation range	bar	5 ÷ 40
Maximum flow rate	l/min	40
Ambient temperature range	°C	-20 ÷ +50
Fluid temperature range	°C	-20 ÷ +80
Fluid viscosity range	cSt	10 ÷ 400
Recommended viscosity	cSt	25
Fluid contamination degree	According to NAS 1638 class 10	
Mass	kg	0,2
Surface treatment with white colour zinc	Fe / Zn 8c 1B UNI ISO 2081/4520	

HYDRAULIC SYMBOL

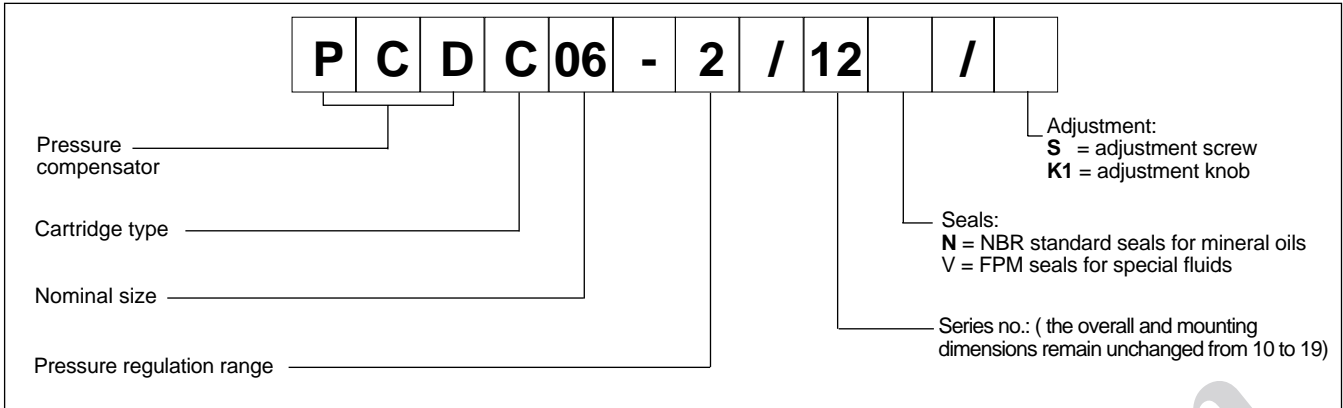




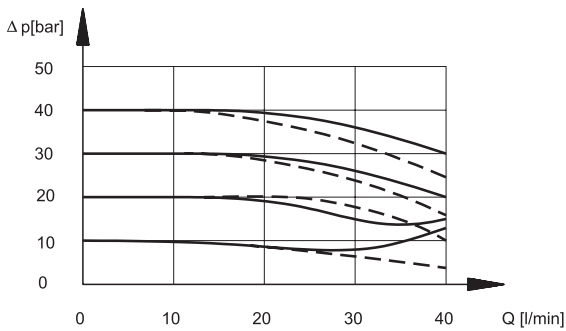
PCDC06

SERIES 12

1 - IDENTIFICATION CODE



2 - CHARACTERISTIC CURVES (values obtained with viscosity of 36 cSt at 50°C)



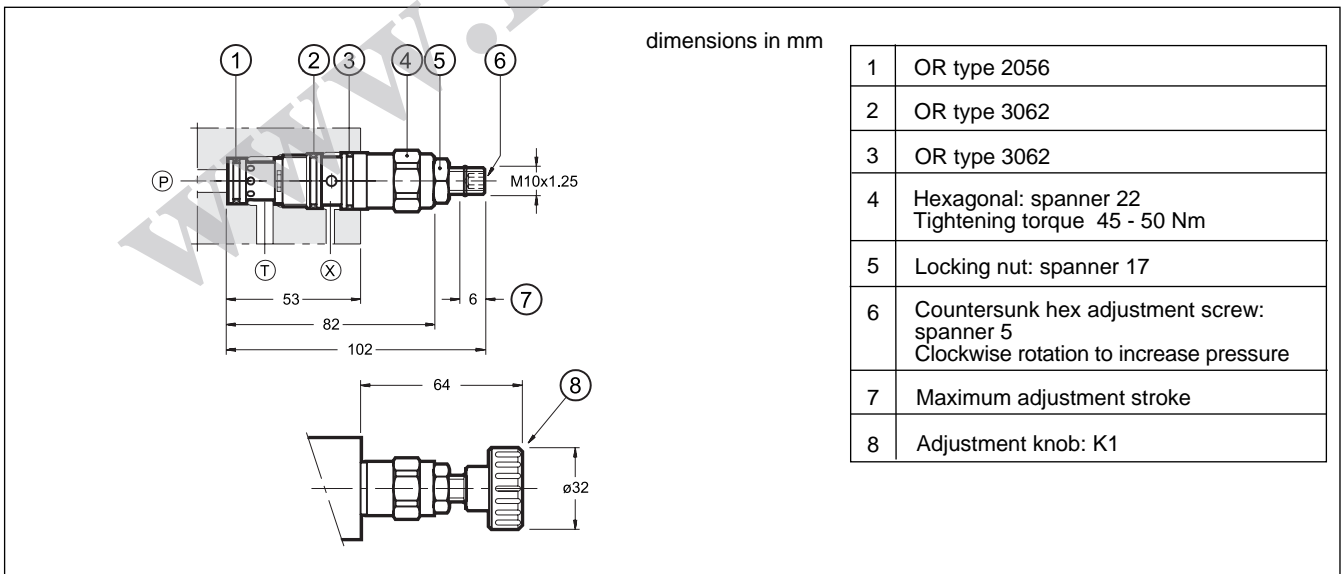
The control curves of the diagram are stated according to the compensator flow rate change and to different Δp setting between P connection and X pilot connection

— user pressure = 30 bar
- - - user pressure = 140 bar

3 - HYDRAULIC FLUIDS

Use mineral oil-based hydraulic fluid, with the addition of suitable anti-frothing and anti-oxidizing agents. For the use of other type (water glycol, phosphate esters and others), please consult our technical department.

4 - OVERALL AND MOUNTING DIMENSIONS



DIPLOMATIC OLEODINAMICA SpA
20025 LEGNANO (MI) - P.le Bozzi, 1 / Via Edison
Tel. 0331/472111-472236 - Fax 0331/548328